

**POLE3 Antibody (N-term)**  
**Purified Rabbit Polyclonal Antibody (Pab)**  
**Catalog # AP7316a**

**Specification**

---

**POLE3 Antibody (N-term) - Product Information**

Application	WB, FC,E
Primary Accession	<a href="#">Q9NRF9</a>
Other Accession	<a href="#">Q642A5</a> , <a href="#">Q9JKP7</a> , <a href="#">Q3SZN5</a>
Reactivity	Human
Predicted	Bovine, Mouse, Rat
Host	Rabbit
Clonality	Polyclonal
Isotype	Rabbit IgG
Calculated MW	16860
Antigen Region	5-34

**POLE3 Antibody (N-term) - Additional Information**

**Gene ID** 54107

**Other Names**

DNA polymerase epsilon subunit 3, Arsenic-transactivated protein, AsTP, Chromatin accessibility complex 17 kDa protein, CHRAC-17, HuCHRAC17, DNA polymerase II subunit 3, DNA polymerase epsilon subunit p17, POLE3, CHRAC17

**Target/Specificity**

This POLE3 antibody is generated from rabbits immunized with a KLH conjugated synthetic peptide between 5-34 amino acids from the N-terminal region of human POLE3.

**Dilution**

WB~~1:1000  
FC~~1:10~50  
E~~Use at an assay dependent concentration.

**Format**

Purified polyclonal antibody supplied in PBS with 0.09% (W/V) sodium azide. This antibody is prepared by Saturated Ammonium Sulfate (SAS) precipitation followed by dialysis against PBS.

**Storage**

Maintain refrigerated at 2-8°C for up to 2 weeks. For long term storage store at -20°C in small aliquots to prevent freeze-thaw cycles.

**Precautions**

POLE3 Antibody (N-term) is for research use only and not for use in diagnostic or therapeutic procedures.

**POLE3 Antibody (N-term) - Protein Information**

**Name** POLE3

**Synonyms** CHRAC17

**Function** Accessory component of the DNA polymerase epsilon complex (PubMed:[10801849](#)). Participates in DNA repair and in chromosomal DNA replication (By similarity). Forms a complex with CHRAC1 and binds naked DNA, which is then incorporated into chromatin, aided by the nucleosome-remodeling activity of ISWI/SNF2H and ACF1 (PubMed:[10801849](#)). Does not enhance nucleosome sliding activity of the ACF-5 ISWI chromatin remodeling complex (PubMed:[14759371](#)).

**Cellular Location**

Nucleus.

**Tissue Location**

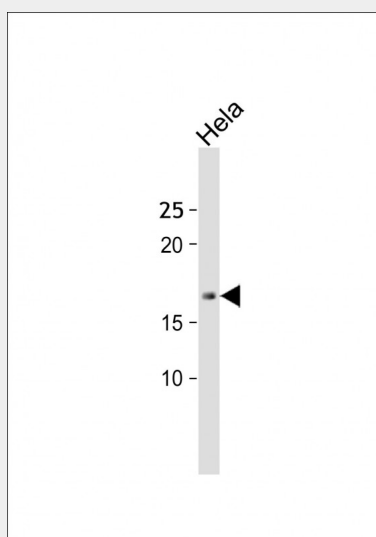
Expressed in heart, brain, placenta, lung, liver, skeletal muscle, kidney and pancreas.

**POLE3 Antibody (N-term) - Protocols**

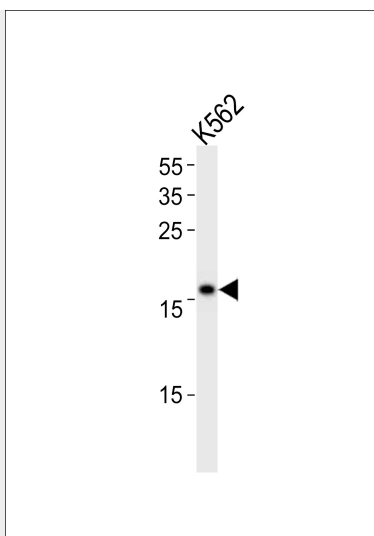
Provided below are standard protocols that you may find useful for product applications.

- [Western Blot](#)
- [Blocking Peptides](#)
- [Dot Blot](#)
- [Immunohistochemistry](#)
- [Immunofluorescence](#)
- [Immunoprecipitation](#)
- [Flow Cytometry](#)
- [Cell Culture](#)

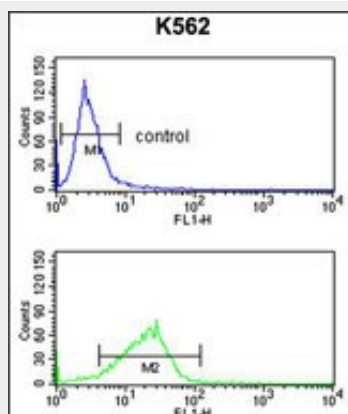
**POLE3 Antibody (N-term) - Images**



All lanes: Anti-POLE3 Antibody (N-term) at 1:250 dilution + HeLa whole cell lysate Lysates/proteins at 20 µg per lane. Secondary: Goat Anti-Rabbit IgG, (H+L), Peroxidase conjugated (ASP1615) at 1/15000 dilution. Observed band size: 17 KDa Blocking/Dilution buffer: 5% NFDM/TBST.



POLE3 Antibody (N-term) (Cat. #AP7316a) western blot analysis in K562 cell line lysates (35ug/lane). This demonstrates the POLE3 antibody detected the POLE3 protein (arrow).



POLE3 Antibody (N-term) (Cat. #AP7316a) flow cytometry analysis of K562 cells (bottom histogram) compared to a negative control cell (top histogram). FITC-conjugated goat-anti-rabbit secondary antibodies were used for the analysis.

### POLE3 Antibody (N-term) - Background

POLE3 is a histone-fold protein that interacts with other histone-fold proteins to bind DNA in a sequence-independent manner. These histone-fold protein dimers combine within larger enzymatic complexes for DNA transcription, replication, and packaging.

### POLE3 Antibody (N-term) - References

Bolognese, F., Imbriano, C. Nucleic Acids Res. 28 (19), 3830-3838 (2000)  
Li, Y., Pursell, Z.F. J. Biol. Chem. 275 (30), 23247-23252 (2000)